

2007 Index of Deprivation

In December 2007 *Communities and Local Government* published its latest release of the Indices of Deprivation, its four-yearly survey of deprivation throughout England.

The Indices consist of measures of seven different forms of deprivation (see information box), as well as a single composite of these measures known as the Index of Multiple Deprivation (IMD). The results are available at three layers of geographic detail:

County and Unitary Authority Level

In the latest IMD list Dorset is ranked as the 25th least deprived county/unitary out of a total of the 149 authorities in England. In the previous release of the survey in 2004 Dorset was ranked 20th.

Area	2007 Rank of 354
Wey. & Portland	127
West Dorset	210
Christchurch	220
Purbeck	241
North Dorset	247
East Dorset	325

↑ most deprived
↓ least deprived

District and Unitary Authority Level

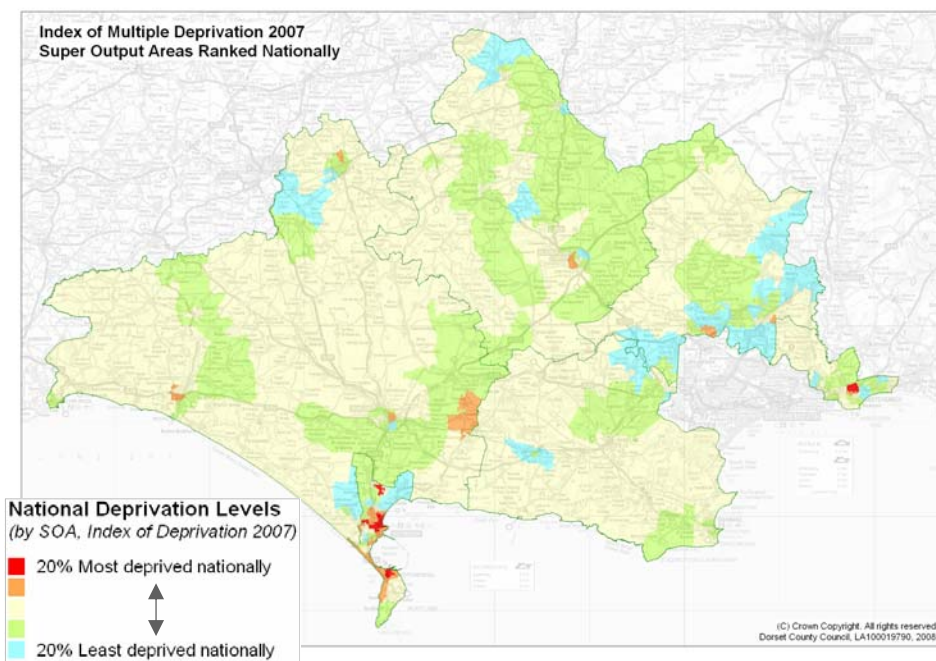
The results have also been made available at district and borough council level. There are 354 district and unitary authorities in England, of which Dorset's most deprived district remains Weymouth and Portland (ranked 127th, previously it was 125th) and its least deprived is East Dorset (ranked as the 30th least deprived area, the same as in 2004). The information box (left) gives the rankings for all of Dorset's districts.

Why is it important?

The index comes from the government and covers all of England. Hence it provides a reliable national comparison that is well respected in funding bids, that is also useful to target funds locally.

7 types of deprivation in the study

- Income
- Employment
- Health Deprivation and Disability
- Education, skills and training
- Barriers to housing and services
- Crime
- Living Environment



“Super Output Area” Level

The smallest level of geographic detail at which information from the Index of Deprivation has been made available is at Super Output Area (SOA), which are areas that contain an average population of 3,000 people.

The map (left) shows all of Dorset's SOAs, which are colour coded according to the level of deprivation measured in the 2007 study. The

colours represent relative deprivation compared to the national picture. Any SOA shaded red has been measured as being in the 20% most deprived SOAs in England.

Out of the 247 SOAs that lie within Dorset, 4% (ten in total) have been measured as being amongst the 20% most deprived in England. Six of these located in central Weymouth, the remainder are to be found in Littlemoor, Fortuneswell, and in Somerford in Christchurch. In Dorset 24% of all the SOAs are to be found in the 20% least deprived nationally.



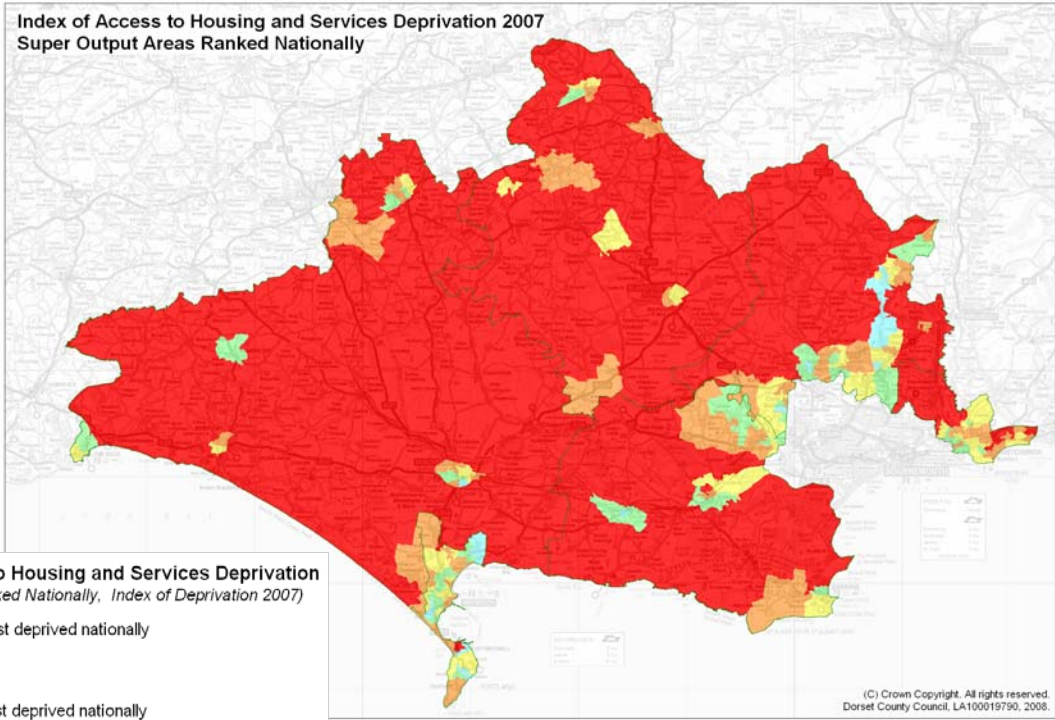
2007 DCC Area- SOAs National Rankings		
	Number of areas in the 20%	
	most deprived	least deprived
IMD	10	59
Income	7	45
Employment	11	48
Health & Disability	9	86
Education, Skills & Training	10	45
Barriers to Housing & Services	74	16
Crime	3	147
Living Environment	18	63

Categories of Deprivation

The Index of Deprivation reported deprivation under seven categories. The table (left) shows the number of SOAs within Dorset that fell into both the 20% most and the 20% least deprived nationally for each category.

In the Crime category Dorset performs well, with just three SOAs featuring amongst the worst 20% in England, all of which were in central Weymouth. In contrast, 147 (70%) of all SOAs in the County were ranked within the 20% that suffered least from crime.

However, Dorset does rank highly in the “barriers to housing and services” deprivation. This category is a measure of the ease to which residents of each SOA have access to core services such as retail facilities, health services, and affordable housing. In this category 74 (30%) of Dorset’s SOAs are regarded as being amongst the 20% most deprived. The distribution of these SOAs within Dorset is shown in the map below:



As mentioned above, the most widespread form of deprivation in the County is that relating to access to services. This domain measures distance to a range of facilities and takes no account of people’s access to private transport, such as a car. It is therefore those without easy access to private transport (e.g. the elderly, low income groups and young adults) for whom this aspect of deprivation is most significant.

Summary

When compared to the Index of Deprivation released in 2004, the 2007 figures show a slight increase in deprivation across Dorset. However, the County as a whole remains relatively free from deprivation. The survey also identifies small pockets of deprivation within Dorset, particularly in parts of Weymouth, Portland and Christchurch. There will also be other areas of deprivation which have not been identified due to the large geographic size of SOAs in rural areas.

Full details of the 2007 Index of Deprivation and maps of each of the domains are available from Research & Information and will be published on www.dorsetforyou/statistics when analysis of the results is complete.

